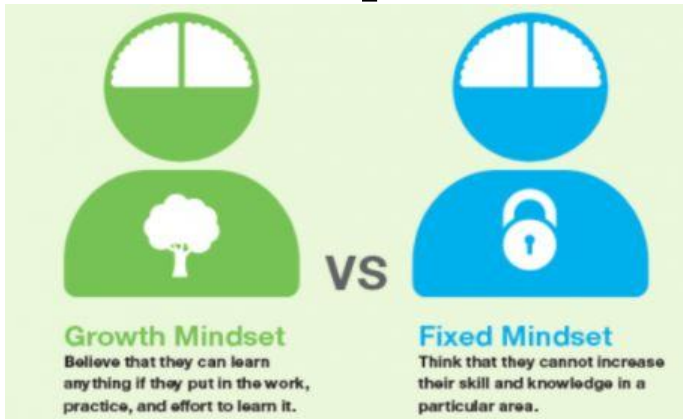


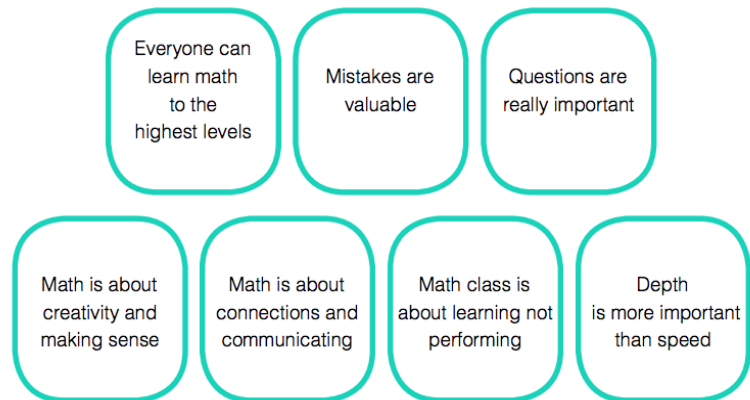
Growth Mathematical Mindsets

This year we will be working on developing a growth mindset in math. We will start each week with a "Mindset Monday" prompt to reflect and/or goal set. Below you will find some information about growth mindsets.

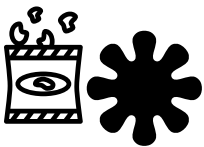
Description



Norms



Policies



Food, Drinks, & Slime: Our classroom is not the cafeteria. We also want to avoid rodents being attracted our classroom. No outside food or drinks are permitted during class time. Slime damages furniture, the floor, clothing and can get stuck in hair. It is also not permitted in our classroom.



Passes: We need EVERY minute. Passes will only be given for emergencies. No passes will be given in the 1st or last 10 minutes of class.



Late work: Assignments are designed to give you an opportunity to apply, make connections, and extend what we are doing in class. It is difficult for assignments to be meaningful if you complete them after they are due. Late work will not be accepted 10 days after original due date and may not get full credit.



Absent from class : We need you! Please try to be present. If you are absent, it is your responsibility to check class website and the folders for work you missed when you return. Come see me before if you know you will be out of school.

Need help?



If you are struggling, come see me immediately outside of class time. I will post my lunch and after school availability each week in our room.